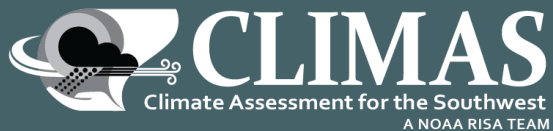


Climate Assessment for the Southwest (CLIMAS)

Alison Meadow
University of Arizona

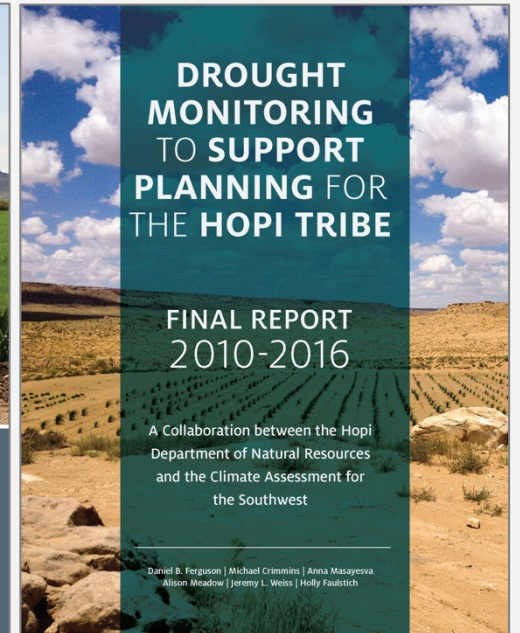
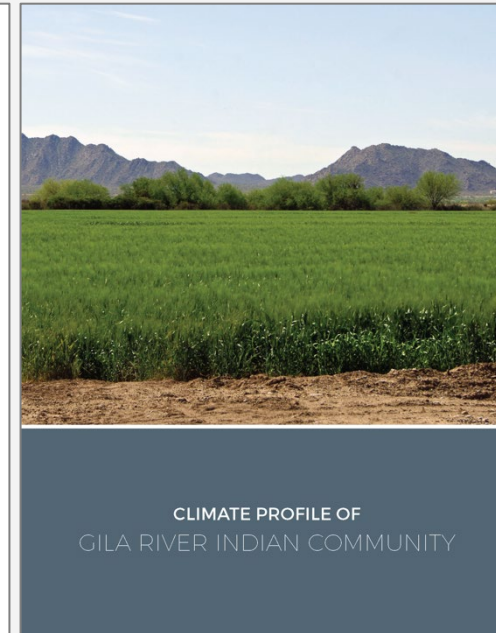
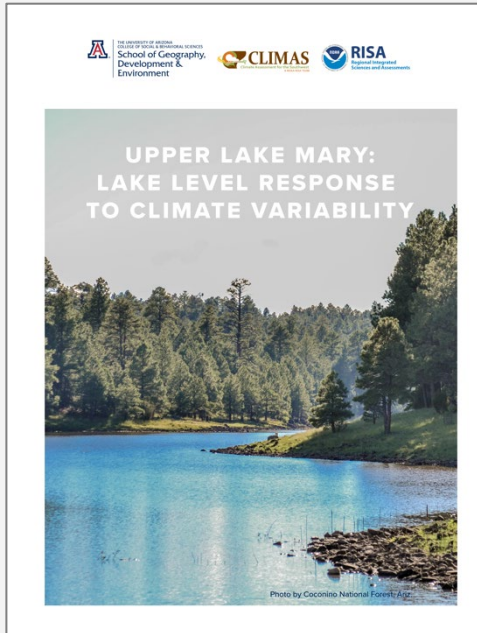
City of Tucson – Tucson Water Urban Heat Island Workshop
October 31, 2023



The Climate Assessment for the Southwest (CLIMAS)

Our goal is to help communities in the SW prepare for and respond to climatic events and climate changes so social and ecological systems remain resilient.

- Continuously funded by NOAA since 1998
- Focused on community-based research about climate variability and climate change
- Over the years members of the CLIMAS team have worked with many communities in AZ and NM, including a number of Tribes



A New Phase for CLIMAS

In September 2022 we kicked off a new 5-year phase. Our current research priorities are:





Develop baseline information—tailored to our partners’ needs—about the influence of climate variability and climate change on seasonal precipitation and how much water makes it into regional river basins (specifically the Gila River and the Rio Grande).



Collaborate with partners across the SW to explore how landscapes are changing as a result of long-term drying and how those changes are impacting livelihoods and well-being of rural communities.

113°

RECORD: 111°
SET IN 1978

114°

RECORD: 114°
SET IN 1918

113°

RECORD: 112°
SET IN 2019



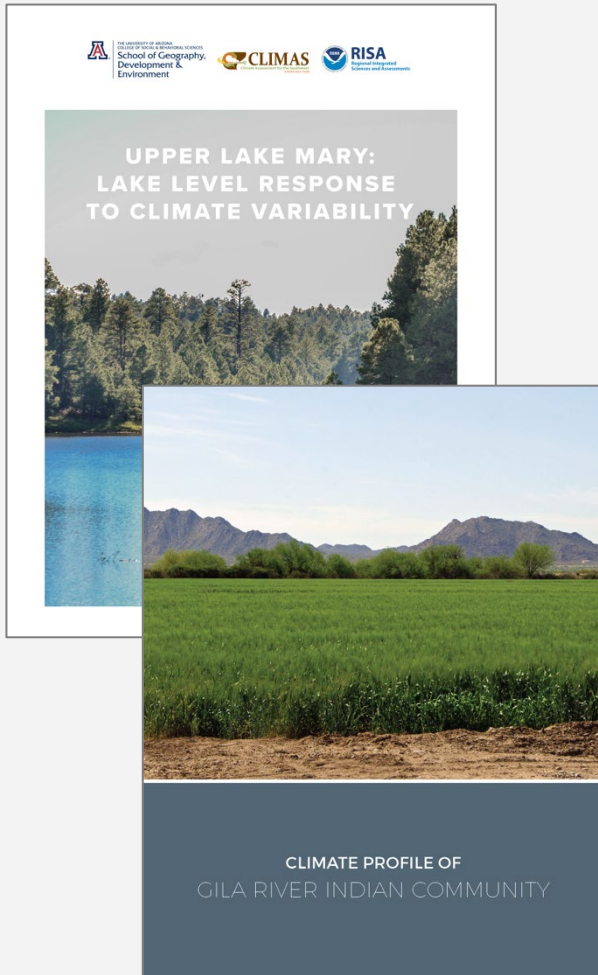
By engaging directly with communities across the SW, first understand their priorities related to increasing heat and then help develop adaptation strategies that support those communities.



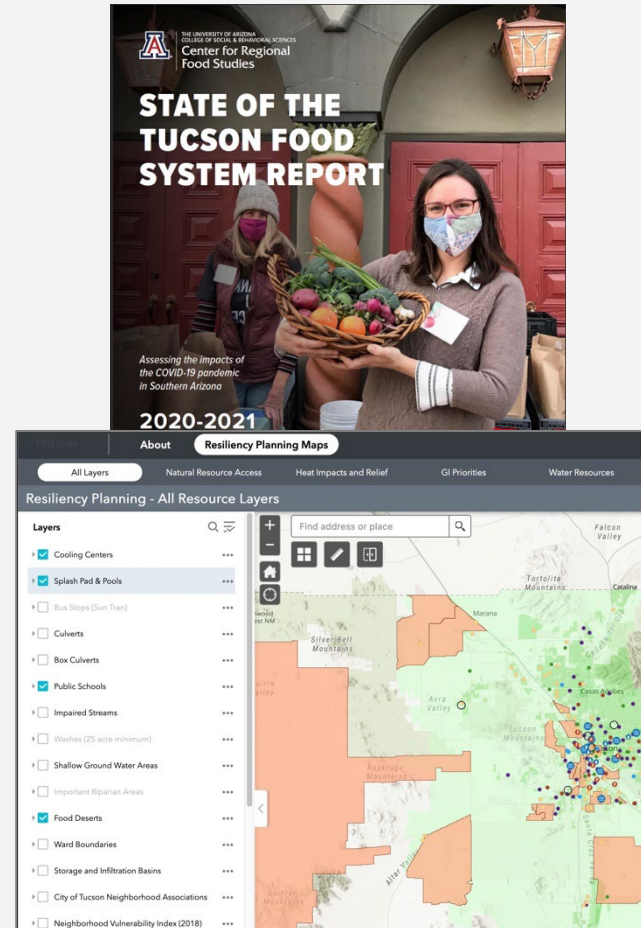
Develop usable health and well-being information for CLIMAS partner communities who are seeking to consider and communicate how human health is connected with climate stressors.

How do we work with communities?

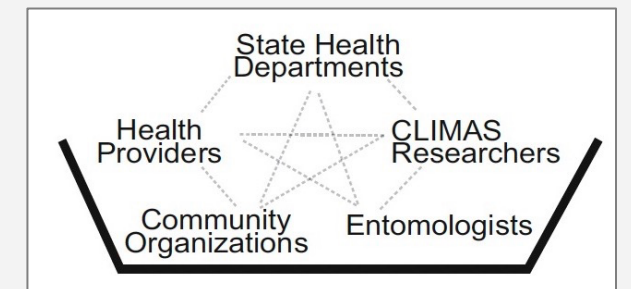
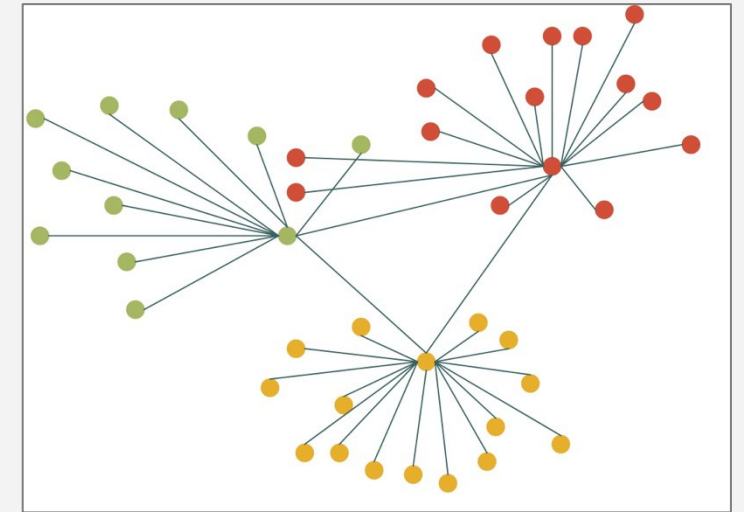
Support Climate-Informed Decision Making



Conduct Community-Based Resilience Research



Connect Community Research Questions to Regional Experts



Thank you!

Welcome to the UHI Workshop!

www.climas.arizona.edu

